

SAMA eCCSA DOWNLOAD AND ACTIVATION

The SAMA eCCSA is a Windows based program and requires the following operating system to run and install on:

- Windows XP / Vista / 7 / 8
- Window's .NET framework and up (will install automatically if not already on your computer)
- A valid SAMA licence activation key

The following steps will be clarified in this document:

1. How to buy the eCCSA
2. How to download the eCCSA
3. How is install the eCCSA
4. How to activate the eCCSA
5. Licence Terms and Conditions

Licence period:

The eCCSA has a two year licence period valid from 1 January 2018 to 31 December 2019. Should you purchase the product within this allocated time period, the licence will only remain valid for the remainder of the above mentioned two year period.

Step 1: How to buy the eCCSA

- ❖ Refer to SAMA's sales process document on how to purchase a SAMA product online.
- ❖ After a successful online sales transaction you should have received an email from SAMA's website with your invoice and product details.
 - If you purchased with a credit card you will receive this immediately after the transaction was successful.
 - If you chose to pay SAMA by means of an electronic funds transfer (EFT) you will receive an email requesting you to make payment, before the system generates an invoice and the product details.
- ❖ Should you not receive this email within 48 working hours after payment was made, please contact SAMA's Medical Coding Unit at 012 481 2073 or coding@samedical.org.

Electronic CCSA Information

If you purchased an electronic version of the CCSA you can install the program by

[Clicking here](#)

First Name: Dr Test

Last Name: Testing

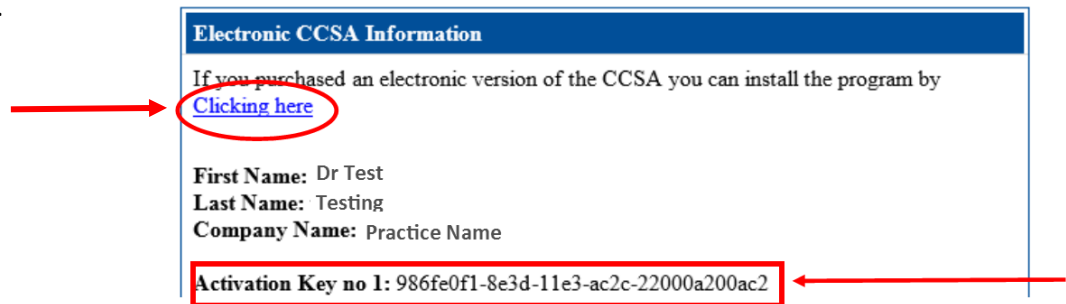
Company Name: Practice Name

Activation Key no 1: 986fe0f1-8e3d-11e3-ac2c-22000a200ac2

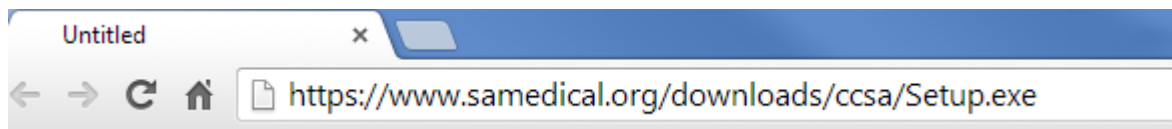


Step 2: How to download the eCCSA

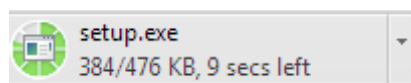
- ❖ Open the email sent from SAMA to the email account as stated in the online sales process.
- ❖ You will note the words “If you purchased an electronic version of the eCCSA you can install the program by clicking here”
- ❖ You will also note the Activation Key for each of the licenses bought.
- ❖ Before you download and install the Windows eCCSA ensure that your computer complies with the set requirements to run the software.
- ❖ To download the program click on the link – “clicking here”, as indicated by the red circle on the left.



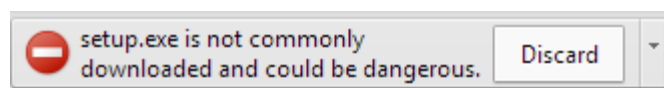
- ❖ Your internet browser should automatically open and redirect you to the following URL webpage: <https://www.samedical.org/downloads/ccsa/Setup.exe>



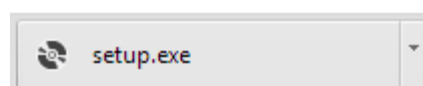
- ❖ Your copy of the eCCSA will automatically download from this website. Notice the download in the bottom left hand corner of your internet browser. (Depending on which browser you used – for demonstration we used Chrome.)



- ❖ Should you receive this error message, please click on the drop down arrow and select ‘Keep’. This message might display depending on the security of your internet browser.



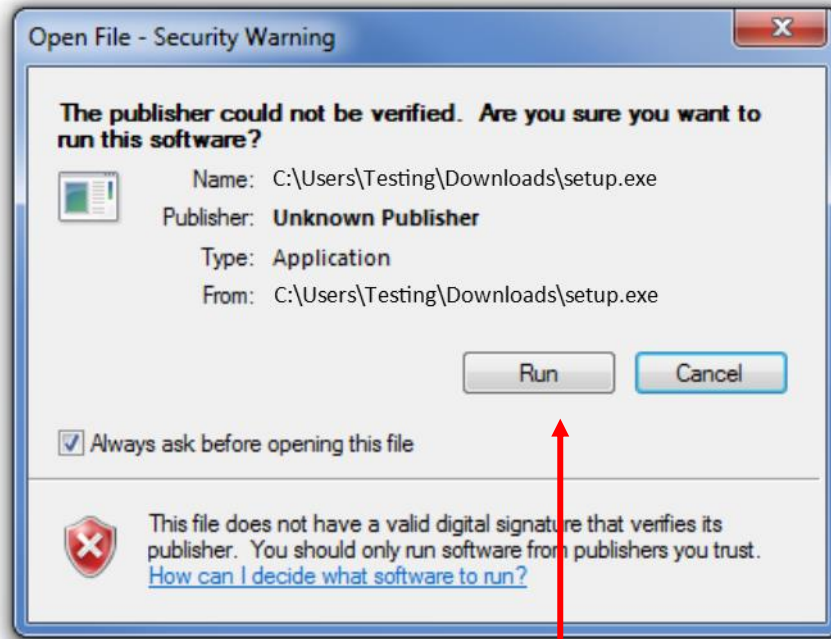
- ❖ Once the download is successful and complete you will see the “setup.exe” file.



- ❖ You have now successfully downloaded the SAMA eCCSA. The next step is to install the program onto your computer.

Step 3: How to install the eCCSA

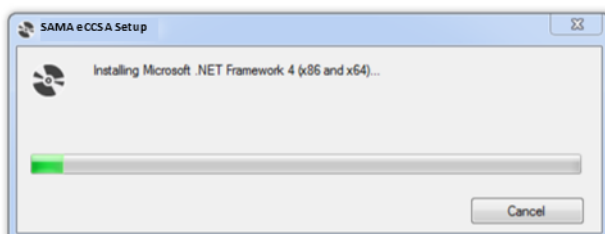
- ❖ Once you have successfully downloaded the SAMA eCCSA, click on the “setup.exe” file which appear after the download is complete.
- ❖ The following security warning will pop up on your computer’s desktop. This occurs because the program was not designed by Microsoft.



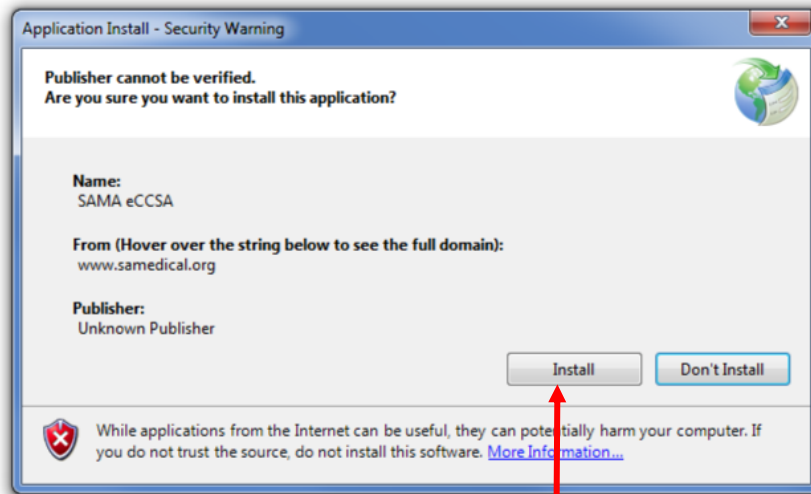
- ❖ Click on “Run” to install the eCCSA.

Additional step for some users

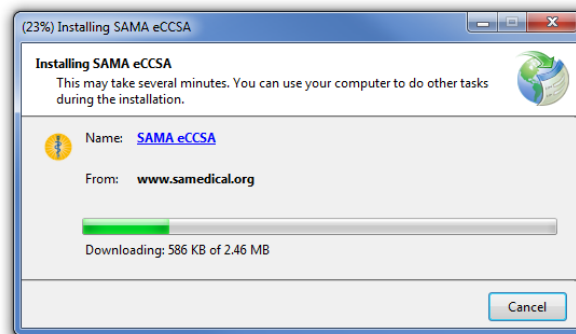
- Depending on the version of Windows running on your computer you might receive this “Microsoft .NET Framework 4” install screen. This is a driver that has to be installed on your computer before all SAMA’s coding products can be installed. Newer versions of Windows might have this driver installed on purchase or with regular updates of Windows, thus not everyone will follow this step.
- Click on “Accept” to install the “Microsoft .NET Framework 4”.
- The installing of Microsoft .NET Framework should start automatically.



- ❖ To install the SAMA eCCSA application this screen will appear once the .NET Framework has completed its install.



- ❖ Click on "Install" to install the program.
- ❖ The program will then start to install on your computer.



- ❖ Wait for the installation to complete. This will take several minutes.
- ❖ Once the installation is complete the above screen will automatically close and a SAMA eCCSA application icon will appear on the desktop of your computer.
- ❖ You have successfully installed the SAMA eCCSA.



Step 4: How to activate the eCCSA

Please note that this activation will require an active internet connection

- ❖ Open the eCCSA by double clicking on the icon on your desktop.
- ❖ The following activation screen will appear:



- ❖ Refer back to the email sent to you from SAMA from where you downloaded the eCCSA. You will note at the end of the email an Activate Key.

Electronic CCSA Information

If you purchased an electronic version of the CCSA you can install the program by [Clicking here](#)

First Name: Dr Test
Last Name: Testing
Company Name: Practice Name

Activation Key no 1: 986fe0f1-8e3d-11e3-ac2c-22000a200ac2

- ❖ 'Copy' this activation key by selecting the unique licence numbers. Alternatively record this unique key and keep it handy to type it in the Activation box in the eCCSA.
- ❖ Return to the SAMA eCCSA and 'paste' the activation key in the box provided. Alternatively retype the key.

SAMA eCCSA

Welcome to the SAMA eCCSA electronic application.
 Enter the Activation key received via email and click on the 'Activate' button to activate your subscription.
 Please note that this activation will require an ACTIVE INTERNET CONNECTION.
 Queries and problems can be directed to coding@samedical.org or by contacting SAMA on +27 (0) 12 481 2073

Activation Key

Exit Activate

- ❖ When you have inserted the Activation Key, click on "Activate". The program should activate your licence.

SAMA eCCSA

Welcome to the SAMA eCCSA electronic application.
 Enter the Activation key received via email and click on the 'Activate' button to activate your subscription.
 Please note that this activation will require an ACTIVE INTERNET CONNECTION.
 Queries and problems can be directed to coding@samedical.org or by contacting SAMA on +27 (0) 12 481 2073

Activation Key 986fe0f1-8e3d-11e3-ac2c-22000a200ac2

Exit Activate

- ❖ You will now be able to work on the SAMA eCCSA program.

File Help

SAMA eCCSA 2018

CCSA

Search

Enter one or more keywords to search for or leave blank to load all the data from the CCSA Codes. Keywords should be separated by a

Search Keywords

Section ALL SECTIONS

Type ALL

CCSA Code Summary

00100 ANAESTH SALIVARY GLAND

Anaesthesia for procedures on salivary glands, including biopsy

Double click any row to show the full details for the selected CCSA Code

Section Code	Code	Long Description	Short Description	Medium Description
AN1	00100	Anaesthesia for procedures on salivary glands, including biopsy	ANAESTH SALIVARY GLAND	ANAESTHESIA SALIVARY GLANDS WITH BIOPSY
AN1	00102	Anaesthesia for procedures involving plastic repair of cleft lip	ANAESTH REPAIR OF CLEFT LIP	ANAESTHESIA CLEFT LIP INVOLVING PLASTIC REPAIR
AN1	00103	Anaesthesia for reconstructive procedures of eyelid (eg. blepharoplasty, ptosis surgery)	ANAESTH BLEPHAROPLASTY	ANAESTHESIA EYELID RECONSTRUCTIVE PROCEDURE
AN1	00104	Anaesthesia for electroconvulsive therapy	ANAESTH ELECTROSHOCK	ANAESTHESIA ELECTROCONVULSIVE THERAPY
AN1	00120	Anaesthesia for procedures on external, middle, and inner ear including biopsy; not otherwise specified	ANAESTH EAR SURGERY	ANAESTHESIA EXTERNAL MIDDLE & INNER EAR W/BX NOS
AN1	00124	Anaesthesia for procedures on external, middle, and inner ear including biopsy; otoscopy	ANAESTH EAR EXAM	ANAES EXTERNAL MIDDLE & INNER EAR W/BX OTOSCOPY
AN1	00126	Anaesthesia for procedures on external, middle, and inner ear including biopsy; tympanotomy	ANAESTH TYMPANOTOMY	ANAES XTRNL MID & INNER EAR W/BX TYMPANOTOMY
AN1	00140	Anaesthesia for procedures on eye; not otherwise specified	ANAESTH PROCEDURES ON EYE	ANAESTHESIA EYE NOT OTHERWISE SPECIFIED
AN1	00142	Anaesthesia for procedures on eye; lens surgery	ANAESTH LENS SURGERY	ANAESTHESIA EYE LENS SURGERY
AN1	00144	Anaesthesia for procedures on eye; corneal transplant	ANAESTH CORNEAL TRANSPLANT	ANAESTHESIA EYE CORNEAL TRANSPLANT
AN1	00145	Anaesthesia for procedures on eye; vitreoretinal surgery	ANAESTH VITREORETINAL SURG	ANAESTHESIA EYE VITREORETINAL SURGERY
AN1	00147	Anaesthesia for procedures on eye; iridectomy	ANAESTH IRIDECTOMY	ANAESTHESIA EYE IRIDECTOMY
AN1	00148	Anaesthesia for procedures on eye; ophthalmoscopy	ANAESTH EYE EXAM	ANAESTHESIA EYE OPHTHALMOSCOPY
AN1	00160	Anaesthesia for procedures on nose and accessory sinuses; not otherwise specified	ANAESTH NOSE/SINUS SURGERY	ANAESTHESIA NOSE & ACCESSORY SINUSES NOS

- ❖ Refer to the “How to use the SAMA eCCSA” for in-depth training on the program.

Step 5: Familiarise yourself with the Terms and Conditions of your licence

Definitions

"Intellectual Property Rights" means all existing, future or contingent intellectual property rights including but not limited to patents, trademarks, service marks, design rights (whether registrable or not), applications for any of the foregoing, copyright, database rights, domain names, inventions, know-how, techniques, processes, trade secrets, confidential information, trade or business names and any other similar rights or obligations whether registrable or not in any part of the world, and shall include the right to apply for the same and the benefit of any and all licenses in connection with the aforementioned;

"CCSA" means the Complete CPT® for South Africa and the Electronic Complete CPT® for South Africa (eCCSA) as published from time to time by the South African Medical Association and includes, without limitation, any information contained in the Complete CPT® for South Africa and Electronic Complete CPT® for South Africa including codes, modifiers, descriptors, interpretations, Relative Value Units (RVU), data, text, graphics, images, designs, software, and any other material contained in the CCSA and eCCSA.

"SAMA" means the South African Medical Association, an association incorporated under Section 21 of the Companies Act , Registration Number: 1927/000136/08);

"Third Party Material" means, without limitation, any information, data, adverts, slogans, trademarks, logos, graphics, hypertext and other computer links and any other material supplied by third parties to SAMA for use or display in the CCSA; and

"Purchaser" means any individual, person, medical doctor, association of doctors, partnerships and incorporated practices and any employee of the medical practitioner, association, partnership, incorporated practice, medical scheme, medical scheme administrator, managed care organisation, independent practitioners association, hospital group, electronic billing service, training institution or any other firm or company who purchases the CCSA from SAMA .

1. Intellectual property

- 1.1 All Intellectual Property Rights in the CCSA are the property of SAMA and the American Medical Association (AMA), which shall retain all the rights, title and interest therein. All rights in the CCSA are hereby reserved.
- 1.2 No part of the CCSA may be reproduced by any Purchaser, without the prior written consent of SAMA. Reproduction in any form or by any means, including without limitation, the reproduction of or transmission to, or the storage in, any other web site or other form of electronic retrieval system is prohibited. Any reproduction of the CCSA or part thereof, to which SAMA has expressly consented, may not be altered in any way and must contain the following notice:

All content in the CCSA and eCCSA including, layout, design, images, programs, text and other information is the property of SAMA and is protected by copyright and other intellectual property laws.



It is prohibited to publish, copy, display, distribute, reproduce, adapt, store, transmit, modify, create derivative works from, or sell or license all or any part of the CCSA in any medium to anyone, except as otherwise expressly permitted under applicable law.

Any unauthorised or unapproved use of any of the contents constitutes infringement of SAMA's intellectual property rights and such infringement is subject to all civil and criminal penalties provided for under domestic and international laws and treaties.

- 1.3 At no time, shall any of the Intellectual Property Rights in the CCSA pass to or vest in any Purchaser.
- 1.4 The name " SAMA " and "Complete CPT® for South Africa Edition" and their logos and all related product and service names and slogans are the trademarks of SAMA and may not be used in any way by any Purchaser, save with the prior written consent of SAMA.

2. Purchaser obligations

- 2.1 The Purchaser undertakes to utilise the CCSA solely for their own internal use. Any use for commercial purposes or financial gain is strictly prohibited and therefore such use thereof shall constitute a breach of these Terms and Conditions. For the purposes of this Clause, SAMA hereby grants to the Purchaser a limited, revocable and non-exclusive license for a period of 24 months to use the Content as specified within these Terms and Conditions.
- 2.2 No Purchaser may copy, duplicate, distribute, adapt, modify, store (in any form) or in any way reproduce the CCSA or any part thereof or knowingly permit the same without the prior written consent of SAMA as the holder of the intellectual property rights.
- 2.3 The Purchaser shall not be permitted to incorporate the CCSA or any extracts of the CCSA in any other work or publication, whether in hard copy or electronic or any other form.
- 2.4 The Purchaser shall, at no stage, acquire any right, title or interest in Third Party Material contained within the CCSA.

3. General

- 3.1 These Terms and Conditions constitute the entire agreement between the parties in relation to the use of the CCSA and supersedes any previous agreement or understanding between the parties.
- 3.2 Any notice required or permitted to be given by the Purchaser to SAMA under these Terms and Conditions shall be in writing addressed to SAMA at its registered office. Any notice required or permitted to be given by SAMA to the Purchaser under these Terms and Conditions shall be in writing addressed to the Purchaser at the address supplied in the purchase order.
- 3.3 No failure or delay by either party in exercising any of its rights under the Terms and Conditions shall be deemed to be a waiver of that right, and no waiver by either party of any breach of the Terms and Conditions by the other shall be considered as a waiver of any subsequent breach of the same or any other provision.
- 3.4 If any provision of these Terms and Conditions is held by any competent authority to be invalid or unenforceable in whole or in part, the validity of the other provisions of these Terms and Conditions, or the remainder of the provision in question, shall not be affected.
- 3.5 These Terms and Conditions shall be construed and governed in accordance with South African law and the law of the countries of third parties if applicable



- 3.6 Neither party may assign their rights under these Terms and Conditions, in whole or in part, without the prior written permission of the other party.

4. Disclaimer

SAMA shall not be liable to any party else for any loss or injury, caused in whole or in part by its negligence or contingencies beyond its control in procuring, compiling, interpreting, reporting or delivering information in the CCSA. In no event will SAMA be liable for any decision made or action taken in reliance on such information. SAMA shall not be liable for any damages (including without limitation consequential, special, incidental, indirect or similar damages) even if advised of the possibility of such damages

SUPPORT

Type of support	Solution
Register a Profile on SAMA's website	Contact Precious Qwabe on 012 481 2164
Buy a SAMA product online	Contact SAMA's coding unit on 012 481 2073 or email coding@samedical.org
Technical support	Contact the program developer SOSiT on 087 550 1715 or email support@sosit.co.za
Coding support	Contact SAMA's coding unit on 012 481 2073 or email coding@samedical.org

eCCSA 2018

